



**HARRISBURG EAGLE  
PARK TRAILS PROJECT**



## HARRISBURG EAGLE PARK

- 1.84 Miles New Trails
- 2.20 Total Miles
- 3 Trailheads:
  - North Park Area
  - North End of Big Pond
  - Inter-pond Location



## Northern Eagle Park:

### 1<sup>st</sup> Phase:

Dog Park

.36 miles natural (unimproved) trails

3 river viewpoints

3 Signs

ADA/General Use Trail

1 Main River Viewpoint

ADA Accessible Picnic Areas

### RTP Improvements:

2 Trailheads in this area

### Future Phases:

Natural Field/Boulders

Play field

Playground Area

Picnic Tables

Dock

Boat Launch

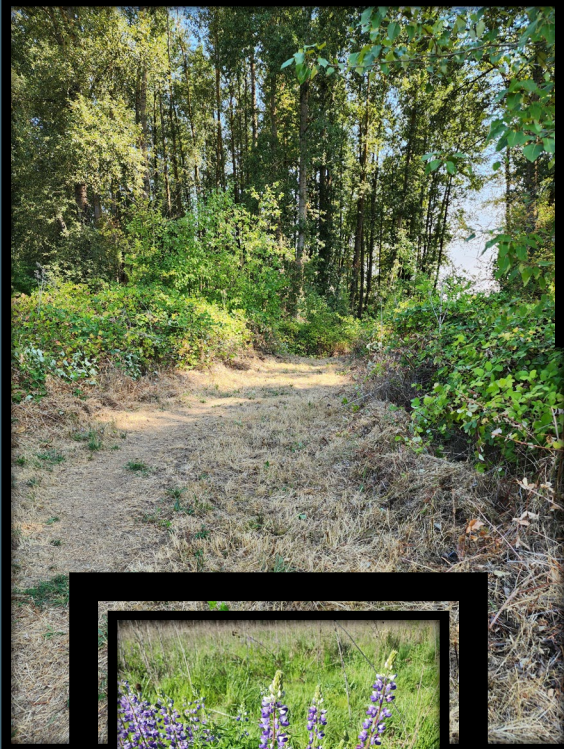
Footbridge over seasonal overflow creek

## NORTH PARK AREA TRAILHEAD

- ❖ 2 Parking Spaces
- ❖ 500 sq. ft. 'landing'
- ❖ Wayfinder Sign w/legend

Leads to existing (not improved)  
.36 miles of recreational/active  
trail through forest with two  
Willamette River Side Channel  
View Point – Connects with ADA  
Trail. One interactive Historical  
Sign Planned in this section.







ADA/MULTI-PURPOSE  
PATHWAY

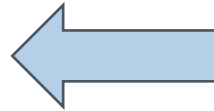


## ADA/MULTI-PURPOSE PATHWAY

ADA Pathway links with Wood Chip Recreational/Active Trail.

Includes Willamette River Viewpoint, and Big Pond Viewpoints to the side.

ADA Accessible Picnic Spots and Historical Sign in relation to Morse Bros to be in this location.



TRAILHEAD NO. 2:  
2 PARKING SPACES  
500 SQ. FT. LANDING  
WAYFINDER SIGN &  
LEGEND  
LEADS TO 5' GRAVEL  
PATH TO PONDS

FUTURE GRANT TO  
FUND PLAYGROUND,  
PLAY FIELD, DOCK, &  
BOAT LANDING







# Lower Eagle Park Area: RTP Grant Funds: 1.84 Miles of new Trail

Compacted Gravel in middle pond area  
5 Parking Spaces  
1 ADA Space  
Bulletin Board/Legend/Wayfinding Signs

Woodchip Pathway on west bank of southwest pond  
New River Viewpoint  
Natural paths with wayfinding signs in Riparian area  
ADA Viewpoints on Compacted Roadway with Park Benches

Future Grants:  
Planting Trees on west bank  
ADA Accessible Dock  
Footbridge over Fish Channel  
Disc Golf Course



**Legend**

- Project Limits
- UGB
- City Limits
- Access Drive
- Multi-Use Path / ADA / Accessible Crushed Rock / Native Compacted Roadway
- Primary Path Bark / Natural
- Secondary Path Native Material
- Future Path Native Material
- Railway
- Wetland
- Upland
- Shrubs
- Trees
- 5-ft Contours
- Pedestrian Access
- Head-in Parking
- Boat Launch (Phase 3)
- Accessible Fishing Dock (Phase 3)
- Footbridge (Phase 3)
- Restrooms (Phase 3) (vault toilets)

**Programming**

- Restrooms
- Trailhead
- Benches
- Playground
- Bike Trail
- Running Trail
- Hiking Trail
- Fishing
- Viewpoint
- Picnic Area
- Boat Launch
- Dog Park
- Disc Golf

**EAGLE PARK  
CONCEPT PLAN**

An aerial photograph of a park area featuring several interconnected ponds. A dirt road runs through the center, with a parking area on the right side. A blue arrow points to a specific spot in the parking area. The surrounding landscape is lush with green trees and grass. In the background, a bridge spans across a larger body of water.

## Lower Eagle Park & Ponds

### Trailhead No. 3:

- 5 Parking Spaces
- 1 ADA Space
- Bulletin Board/Wayfinding Sign with legend

Future ADA Accessible Dock  
Location



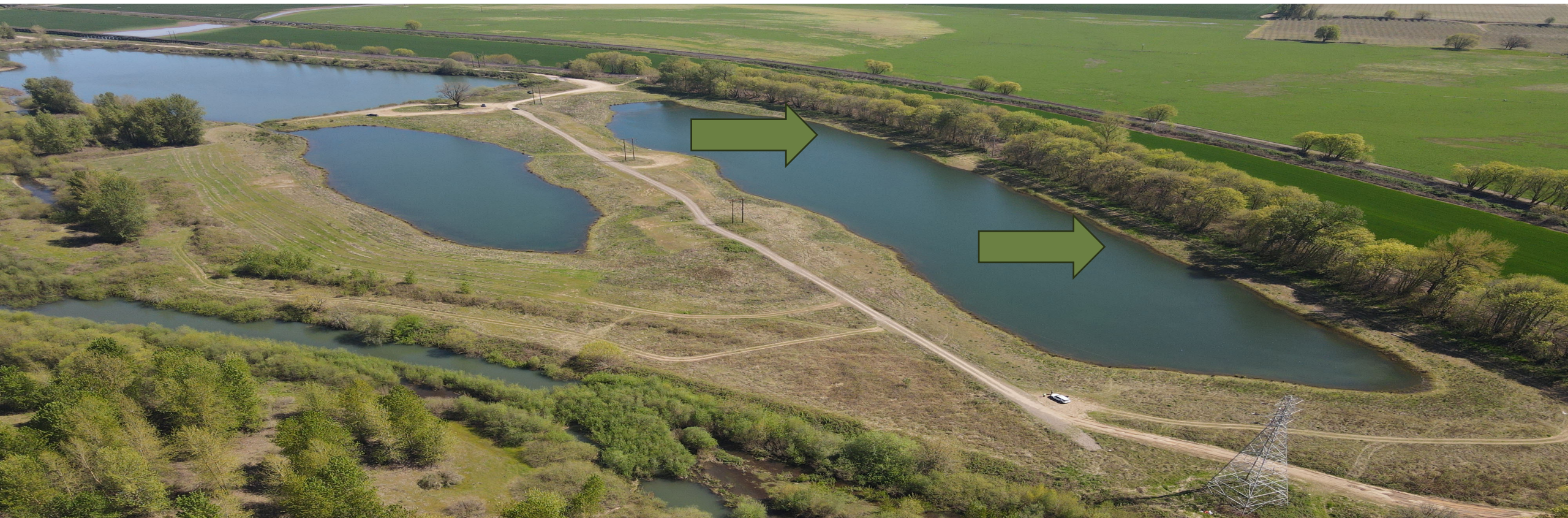
# LOCATION OF WOOD CHIP TRAIL ON WEST BANK OF SW POND



- Future Trees to be planted to replace those that have died after the reclamation process on the west bank of the sw pond.
- This trail matches up with the bottom of the Compacted Roadway/ADA Trail on the east bank of the southeast pond.
- People can also walk back on the middle driveway.

ADA TRAIL ON  
COMPACTED/NATURAL  
ROADWAY BED

- This pathway will be graded to stay level.
- 3 benches to be added to this area for wildlife viewing
- Concrete Bollards to block transportation devices





NATURAL TRAILS  
BLAZED IN RIPARIAN  
AREAS – WAYFINDING  
SIGNS ON TREES TO  
ESTABLISH LOCATIONS  
AFTER FLOODING



## PROJECT BUDGET WORKSHEET

Description	Cost	Match	Request
Native Surface Trail 1.02 miles	\$73,034.00	0	\$73,034
Natural Surface Trail – Existing Compacted Road (.35 miles ADA), expenses for shoring/grading (contracted Labor)	\$12,530	0	\$12,530
Gravel ADA/Accessible Trail	\$78,917	\$31,000	\$47,917
Parking Lot – New Construction, Combined Contracted Labor & City Labor/Supplies	\$13,420	\$4,900	\$8,520
Trail Head Access – New Construction	\$18,466	\$10,800	\$7,666
Totals	\$196,367	\$46,700	\$149,667

THANK YOU

Michele Eldridge

541-995-2200

[meldridge@ci.harrisburg.or.us](mailto:meldridge@ci.harrisburg.or.us)

[www.ci.harrisburg.or.us](http://www.ci.harrisburg.or.us)

